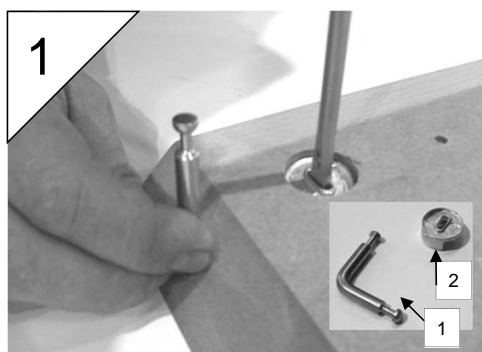
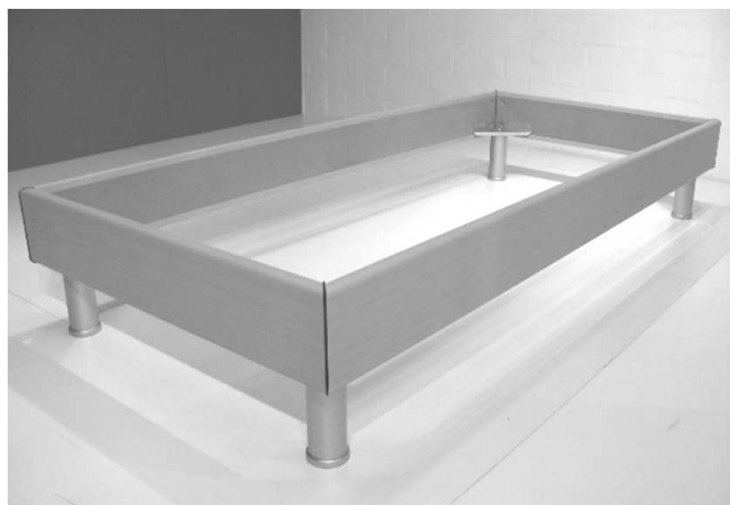
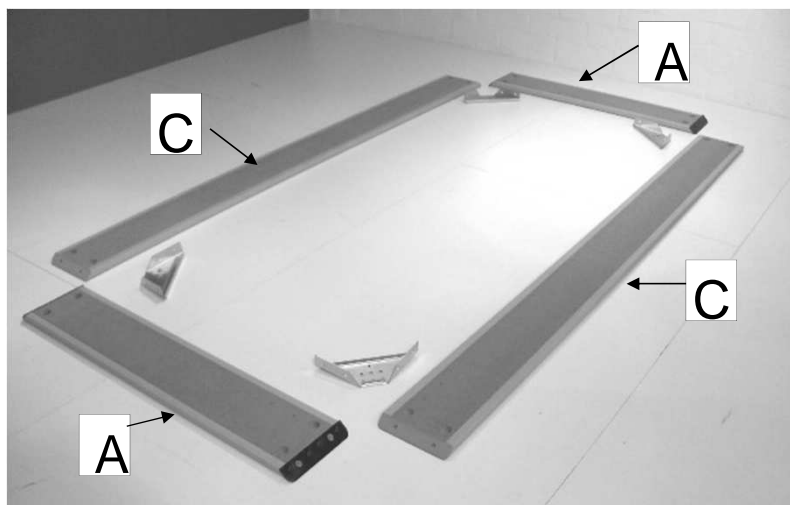


Montagehandleiding bed Athena 90cm

Manuel de montage lit Athena 90cm

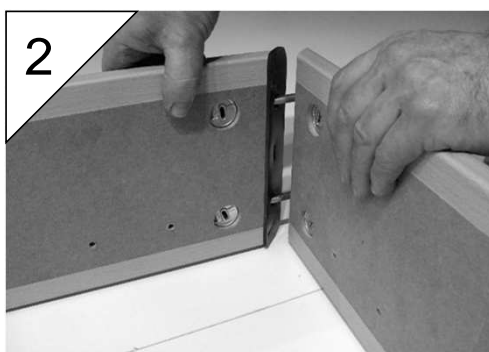
Assembly instructions bed Athena 90cm



Plaats de verbindingshaken 1 in de bedzijde C en schroef vast met de cilinders 2.

Posez les ferrures d'assemblage 1 dans les longerons C et fixez avec les cylindres 2.

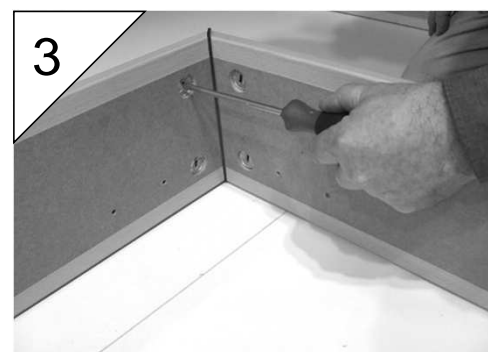
Put the fittings 1 into the bedside rails C and screw them tight with the cylinders 2.



Verbind de breedtebalken A en de bedzijden C.

Connectez les pièces du largeur A et les longerons C.

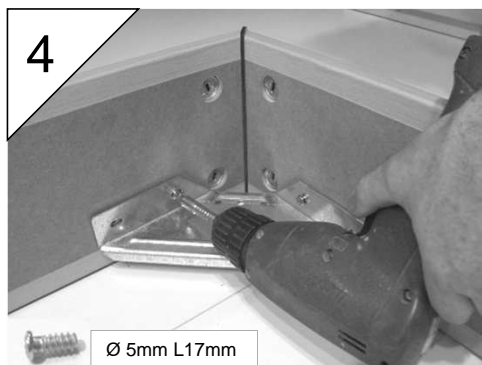
Connect the crossbeams A to the bedside rails C.



Schroef de verbindingen dicht.

Fixez les connexions.

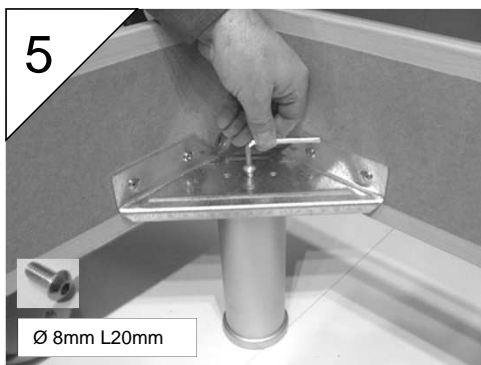
Screw the connections tight.



Schroef de metalen hoekstukken vast.

Vissez les raccords en métal.

Screw on the corner fittings.



Schroef de poten op hun plaats.

Vissez les pieds en place.

Screw on the legs.

