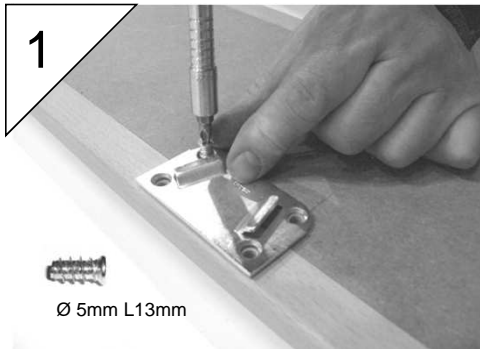
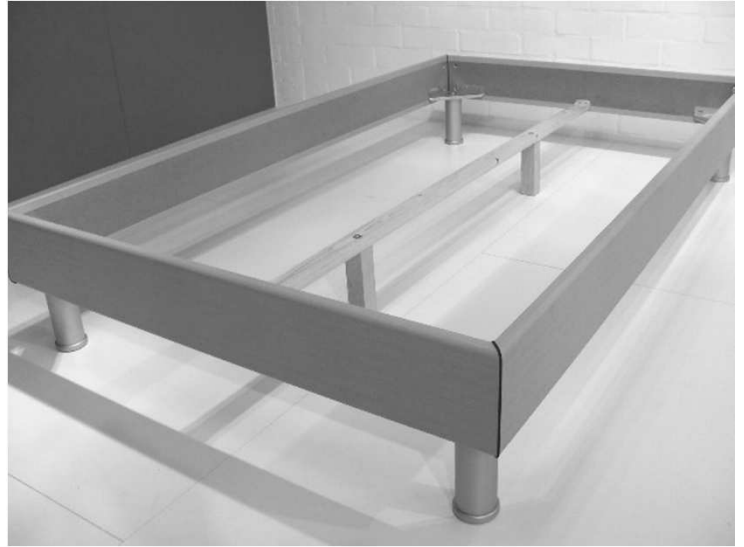
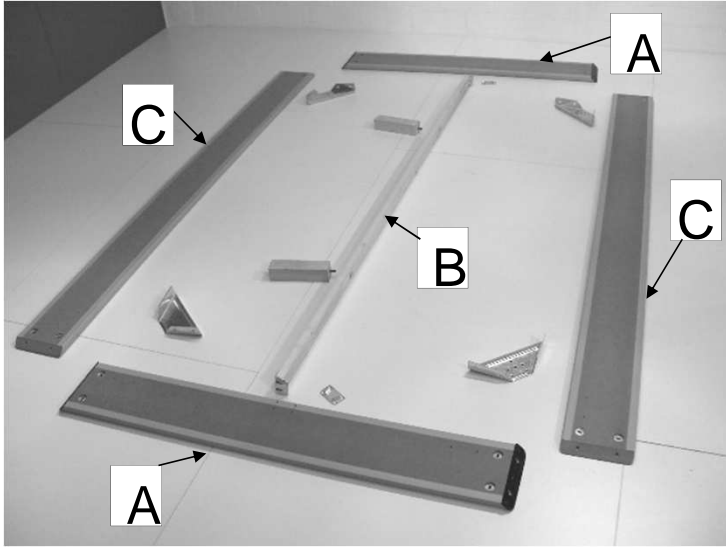


Montagehandleiding bed Athena 120/140/160/180cm

Manuel de montage lit Athena 120/140/160/180cm

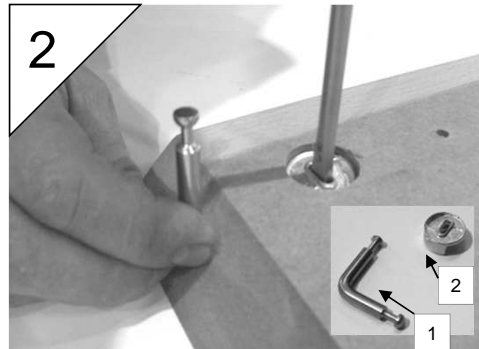
Assembly instructions bed Athena 120/140/160/180cm



Schroef de montageplaatjes voor de lengtebalk B op de breedtebalken A.

Vissez les équerres de montage pour la traverse B sur les pièces du largeur A

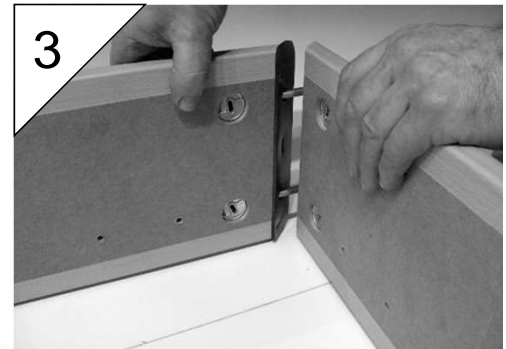
Screw the fittings for the transversal B on the crossbeams A



Plaats de verbindingshaken 1 in de bedzijde C en schroef vast met de cilinders 2.

Posez les ferrures d'assemblage 1 dans les longerons C et fixez avec les cylindres 2.

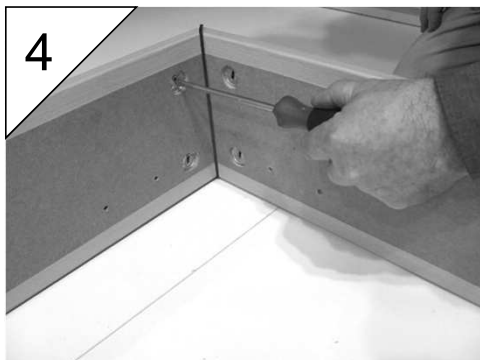
Put the fittings 1 into the bedside rails C and screw them tight with the cylinders 2.



Verbind de breedtebalken A en de bedzijden C.

Connectez les pièces du largeur A et les longerons C.

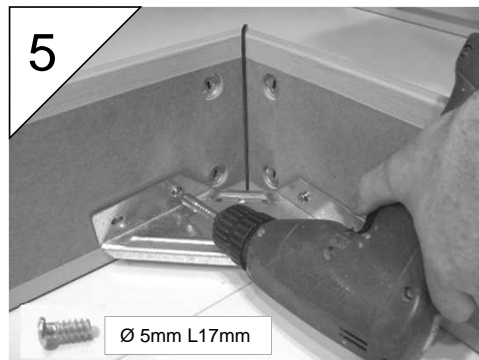
Connect the crossbeams A to the bedside rails C.



Schroef de verbindingen dicht.

Serrez les connexions.

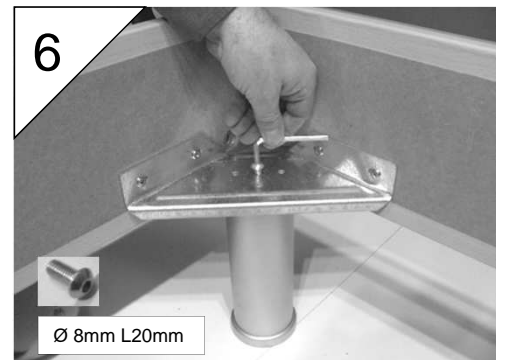
Screw the connections tight.



Schroef de metalen hoekstukken vast.

Vissez les raccords en métal.

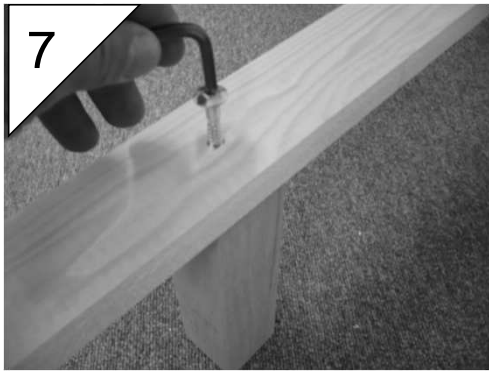
Screw on the corner fittings.



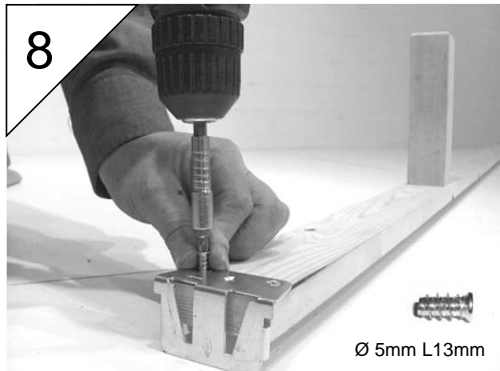
Schroef de poten op hun plaats.

Vissez les pieds.

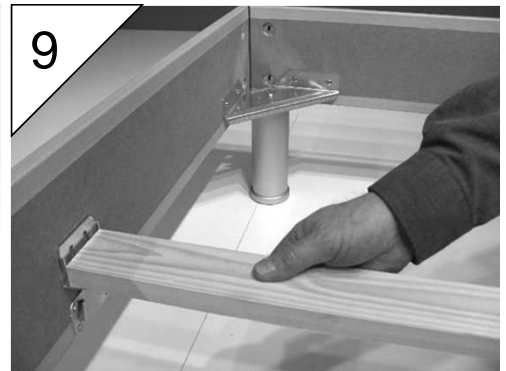
Screw on legs.



7
Schroef de poten in de lengtebalk B (2x)
Vissez les pieds dans la traverse B (2x)
Screw the legs to the transversal B. (2x)



8
Schroef de bevestigingshaken vast op de onderkant van lengtebalk B (2x)
Vissez les équerres de fixation au côté inférieur de la traverse B (2x)
Screw the connexion hooks to the lower side of the transversal B. (2x)



9
Plaats de lengtebalk B
Posez la traverse B
Put the the transversal B into place

